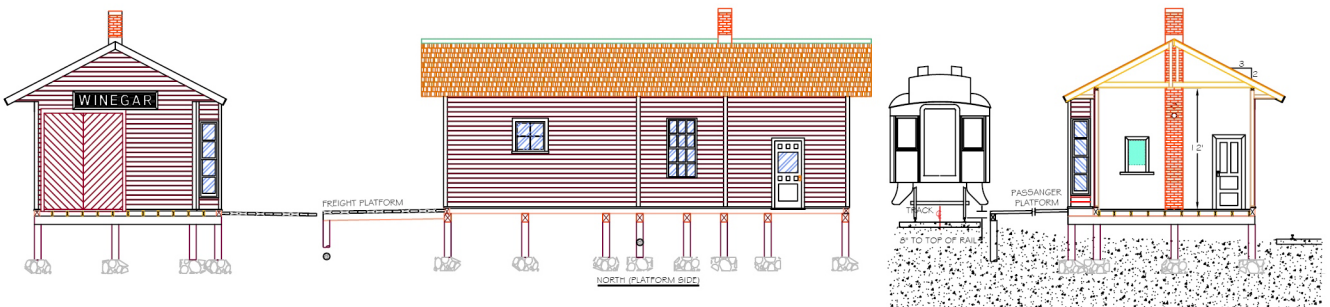
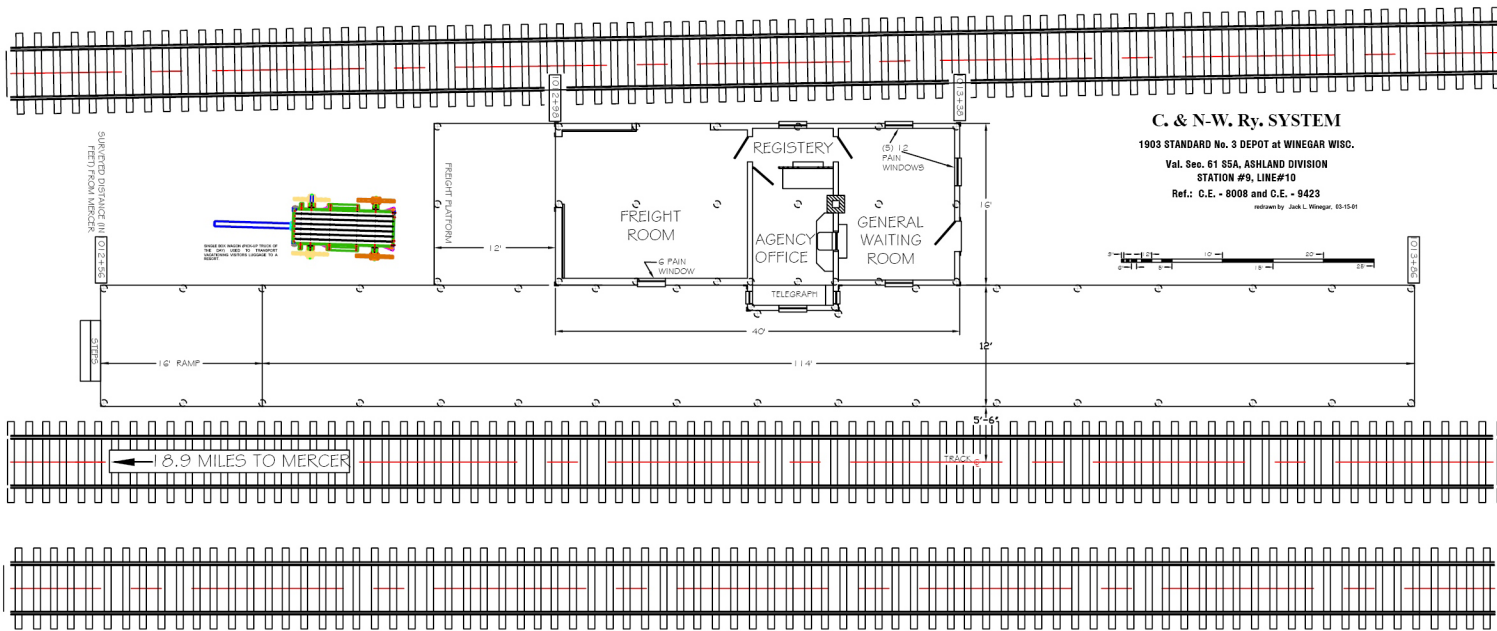
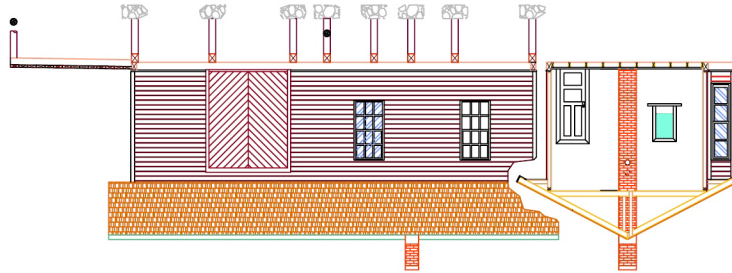


Chicago & North-Western Railway Passenger Schedule

May, 1916, Passenger Schedule of the Ashland Express train #111 from Chicago, IL and train #116-216 from Ashland, WI to Mercer, WI:

- #111 arrived daily at 8:05 AM in Mercer, WI a 390 mile, 11 hour and 45 minute trip from Chicago. Pullman Standard Sleeping Cars, Free Reclining Chair Cars, and a la carte Service with Dining Car with Table d'hôte Service from Chicago to Milwaukee.
- #116-216 arrived daily at 8:49 AM in Mercer, WI a 62 mile, 2 hour and 14 minute trip from Ashland, WI.
- #903 departing Mercer daily (except Sunday) for Winegar at 9:00 AM, a 19 mile, 1 hour and 50 minute trip. (Arrived Winchester 10:00 AM.)
- #904 departing Winegar daily (except Sunday) for Mercer at 1:30 PM a 19 mile, 1 hour and 55 minute return trip to Mercer. (Arrived Winchester 2:10 PM.)

The train to Winegar may not have always kept to a rigid schedule with stories of the train men upon seeing a musky jump, stopping the train for the crew and passengers to go fishing.



The above drawing shows the constructed trackage at Winegar in 1910.

The depot at Fosterville/Winegar was the basic Standard CNW #3 frame depot, but, with two freight doors. The Passenger Waiting Room had the person door on the Platform side.