



Jack L. Winegar is William S. Winegar's 4<sup>th</sup> cousin, 3 times removed. He offers drawings for the modeler to build many of the structures found at the Vilas County Lumber Company at: [www.VCLCo.com](http://www.VCLCo.com)

**Sawmill Operation and Construction for the Modeler**

With 20 colored construction detailing plan set sheets.  
by Jack L. Winegar

**C. & N.-W. RY. #2 DEPOT IN MERCER WISCONSIN**

C. & N.-W. RY. SYSTEM  
1900 STANDARD NO. 2 DEPOT  
REG. D.E. - 1007

© 2017 & 2018 Jack L. Winegar

**AMERICAN BUILT SHINGLE MILL**  
Operation & Construction

With 11 sheet making construction Plan Set.  
by Jack L. Winegar

Fosterville/Winegar C. & N.-W. Ry. #3 Depot with 3-Hole Outhouse.

**C. & N.-W. RY. SYSTEM**  
STANDARD  
**WATER CLOSET**  
SCALE: 1" = 1' - SEPT. 1901  
CHICAGO SHOPS N° 6232

APPROVED: GRIEF ENGR.  
MADE JOINT WITH G. S. F. M. & O. Ry. -  
JAN. 27. 1908

Fosterville/Winegar C. & N.-W. Ry. #3 Depot with 3-Hole Outhouse.

**BLACKSMITH SHOP**

Blacksmith Shop \*\*\* This large Blacksmith Shop was located near the VCLCo River Barrens in spring mill, featuring equipment and of course shoeing the horses. Footprint was 34' x 28'.

Blacksmith Shop \*\*\* This large Blacksmith Shop Plan-Set consists of 1, 13" x 19" Super D sheets with corresponding sheet to 1/200 scale. (overall footprint is 16, 96" x 11, 246").

<https://www.vclco.com/sawmill-complex>

Jack L. Winegar  
Vilas County Lumber Company  
Unique Model Railroad Plan-Sets  
VCLCoSuper@comcast.net 708-945-8740  
12306 Lakeview Trail, Homer Glen, IL  
<http://www.VCLCo.com>

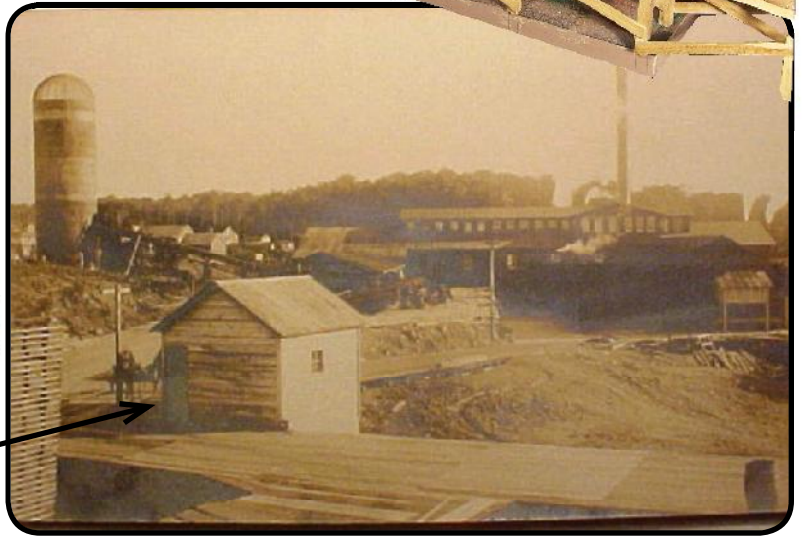
A VCLCo Series of Sawmill Complex Structure.

**V.C.L. Co.**  
**ENGINE HOUSE**

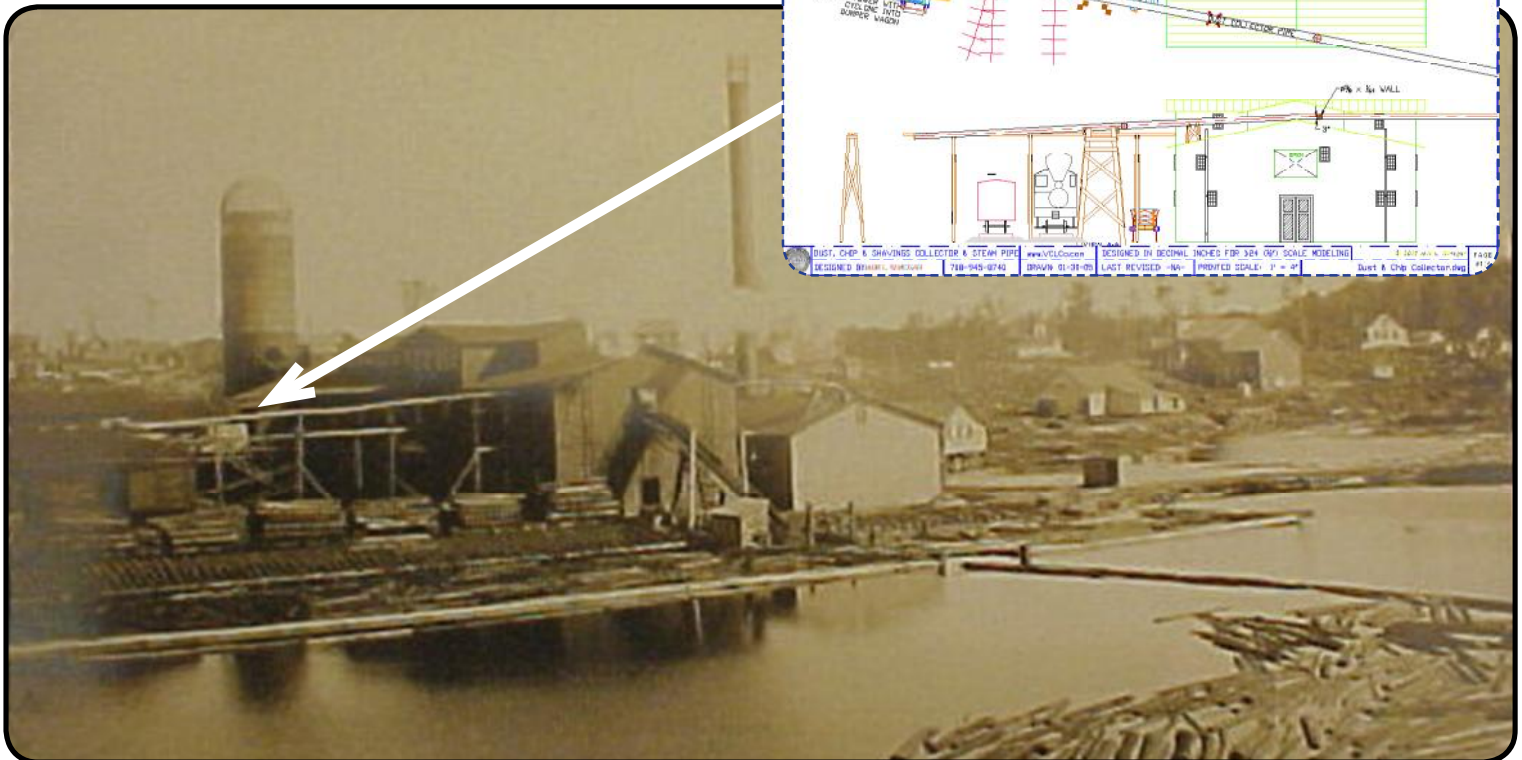
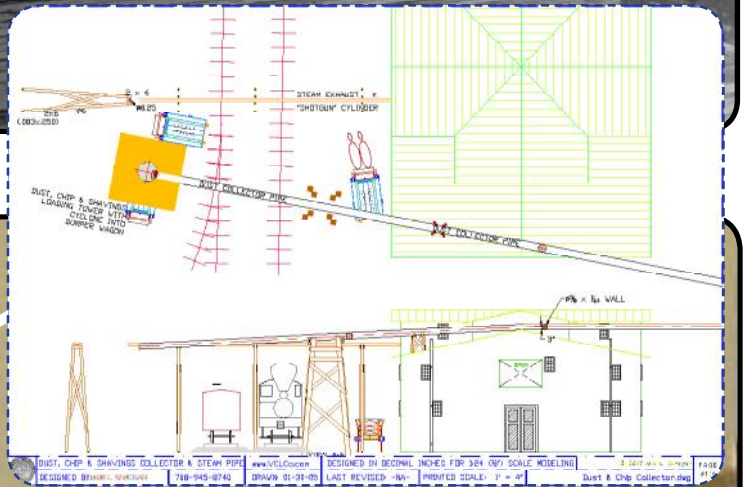
Plan Set includes 8, 12" x 19" sheets in 1/200 scale.  
© 2015 Jack L. Winegar

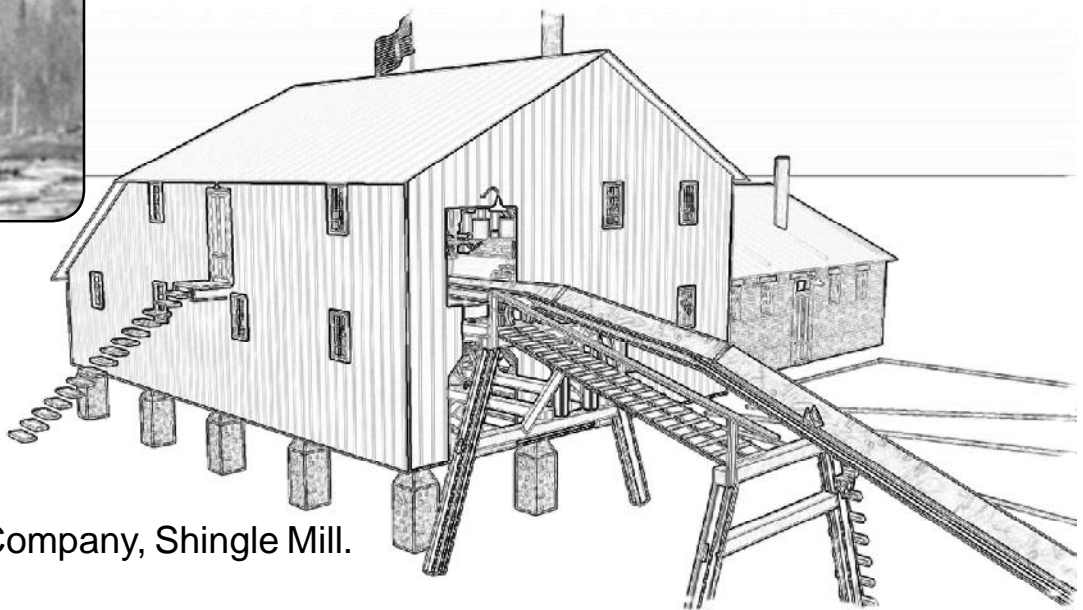
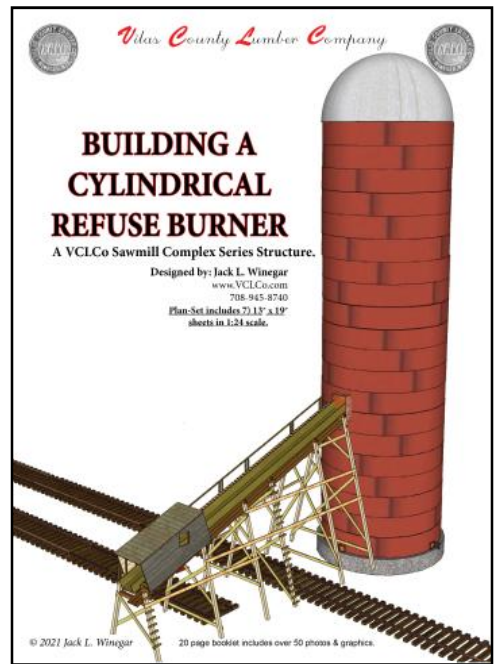
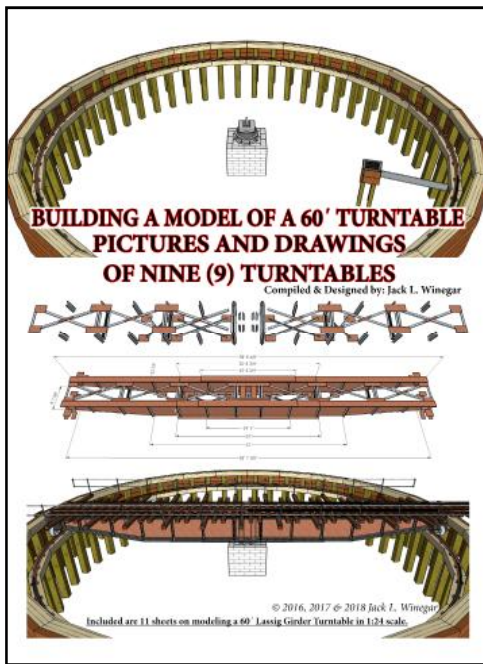
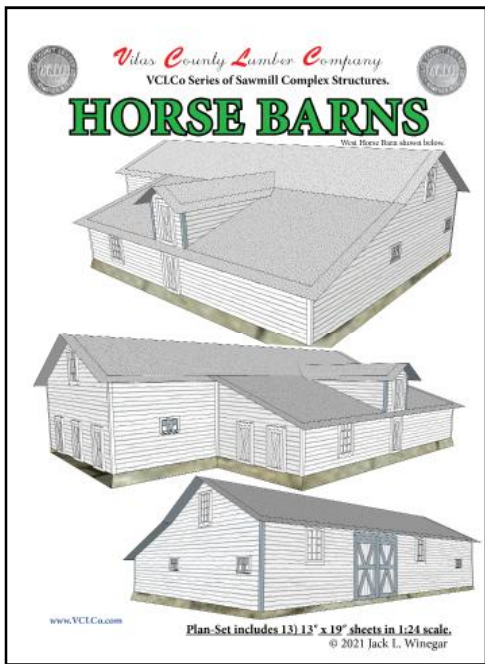
**BUILDING A MODEL OF A SAWMILL BOILER HOUSE**  
VCLCo Series of Sawmill Complex Structures.  
Designed by Jack L. Winegar  
[www.VCLCo.com](http://www.VCLCo.com)  
708-945-8740

Includes 9, 15" x 19" Plan-Set sheets in 1/200 scale.  
© 2021 Jack L. Winegar



KEEP THIS AREA CLEAN



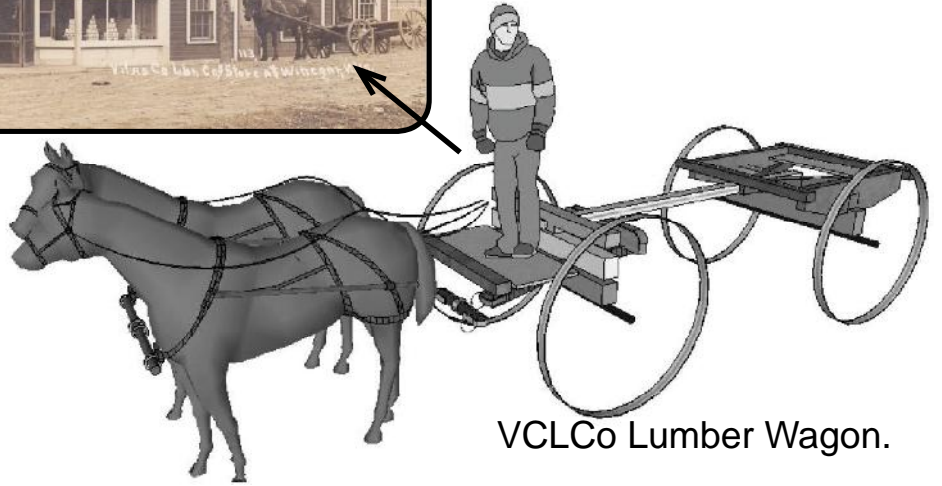


Vilas County Lumber Company, Shingle Mill.

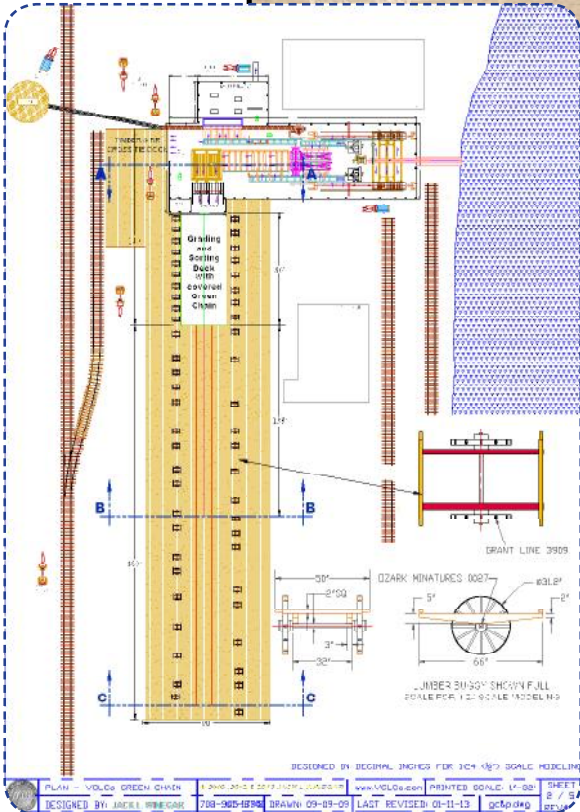




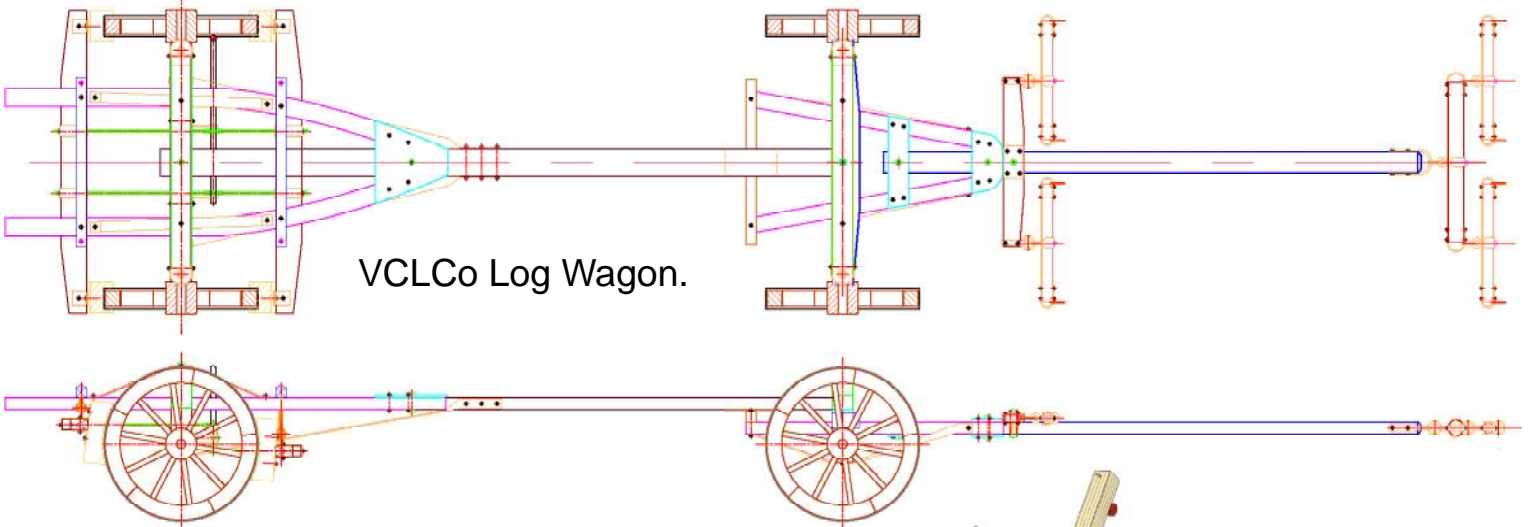
Does the VCLCo Mill Superintendent know one of his teamsters drove a Lumber Wagon into Winegar for a snack at the Company Store in 1912?



VCLCo Lumber Wagon.



VCLCo Lumber Sorting Buggy.

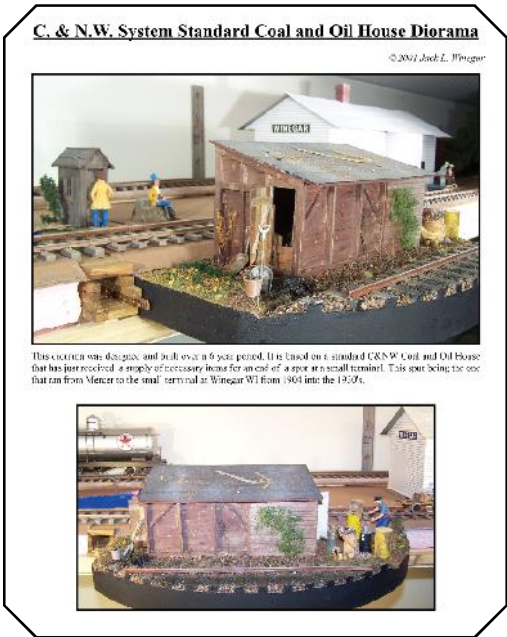
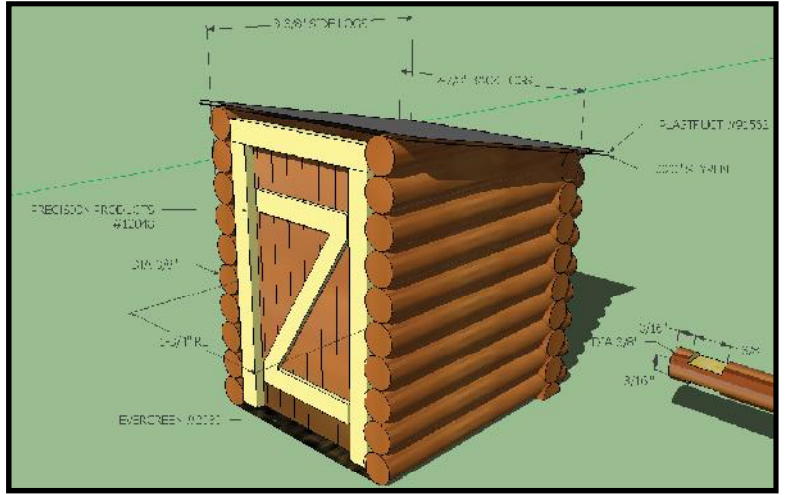


VCLCo Log Wagon.

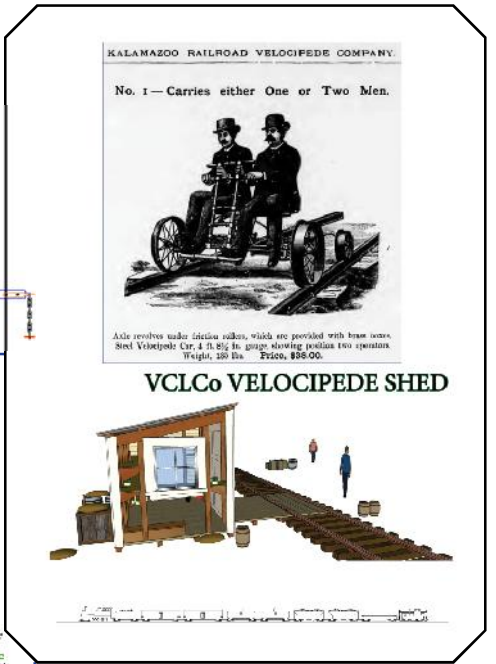
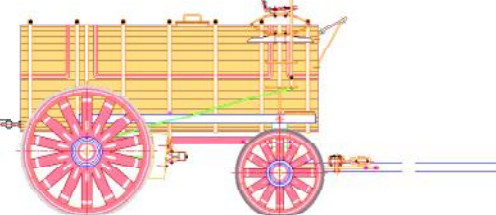


Swing Gin Pole Side Jammer manufactured by the National Iron Company, of Duluth, MN.

Shanty Boy's Kitchen & Dining Hall.



The VCLCo sold water to Company Town residents for 25¢ to fill their water barrels.



C. & N.-W. Ry. Coal & Oil Shed

